



PROPOSED CONDITION

1

SCHMATIC RENDERING - ERIE BLVD AT TUNNEL



DELTA
ENGINEERS, ARCHITECTS, & SURVEYORS
220 Harborside Drive, Suite 202
Schenectady, New York 12305
Tel: 518.427.7200
Fax: 518.427.7210
Email: mail@delta-eas.com
www.delta-eas.com





FENCING AND ARTISTIC RIBBON

- FENCE ARTISTIC RIBBON CREATES VISUAL DRAW TOWARD ALCO TUNNEL
- DEFINES "STREET EDGE EFFECT" CONNECTION TO ERIE BOULEVARD

ROTARY CLOCK PLAZA

- NODE TO DEFINE ACCESS TO TUNNEL AND ERIE BLVD DESIGNATED CROSSING.
- GATHERING / REST AREA
- LIGHTING
- "SCHENECTADY AND ME" BENCH
- INTERPRETIVE SIGNAGE / KIOSK
- TRASH RECEPTACLE
- LOW-MAINTENANCE LANDSCAPING WITH FLOWERING PERENNIALS

WALKWAY

- FENCE WITH ARTISTIC RIBBON CREATES VISUAL DRAW TOWARD ALCO TUNNEL.
- EXPAND EXISTING LIGHTING TO SAFELY ILLUMINATE WALKWAY. DESIGNATED CROSSING.
- DEFINE CONNECTION TO TUNNEL
- LOW-MAINTENANCE LANDSCAPING WITH SHADE TREES, & FLOWERING PERENNIALS

IMPROVE SAFETY AT CROSSING

- IMPROVE PEDESTRIAN VIABILITY
- BRICK TEXTURE PAVEMENT TREATMENT
- RELOCATE VEHICLE STOP BAR
- REDEFINE GARBAGE AND REFUSE STORAGE

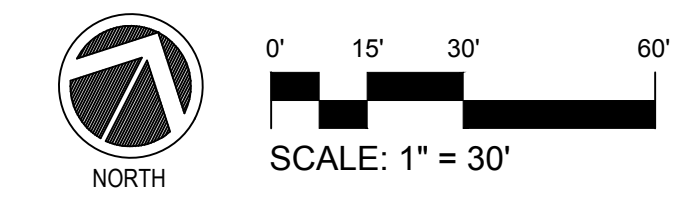
CONCRETE PLAZAS AT TUNNEL ENTRANCES

- ARTISTIC TILE INSTALLATION BY "SCHENECTADY AND ME"
- WAYFINDING SIGNAGE / KIOSK
- LIGHTING
- ILLUMINATED, AND VISUALLY OPEN FOR SAFE PEDESTRIAN ACCESS

WALKWAY

- FENCE WITH ARTISTIC RIBBON CREATES VISUAL DRAW TOWARD ALCO TUNNEL.
- LIGHTING .
- DEFINE CONNECTION TO TUNNEL
- LOW-MAINTENANCE LANDSCAPING WITH FLOWERING PERENNIALS AND FLOWERING TREE.

1 SCHEMATIC PLAN - ALCO TUNNEL
ALCO HERITAGE TRAIL





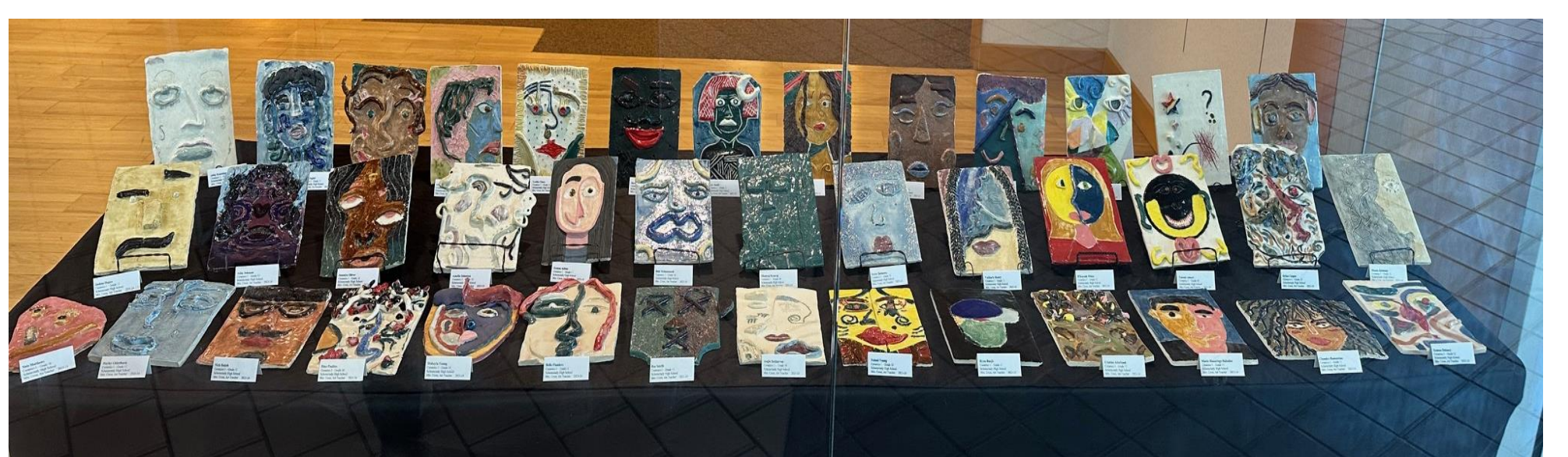
Schenectady & Me Walk

A DRI-funded Project that Celebrates Schenectady

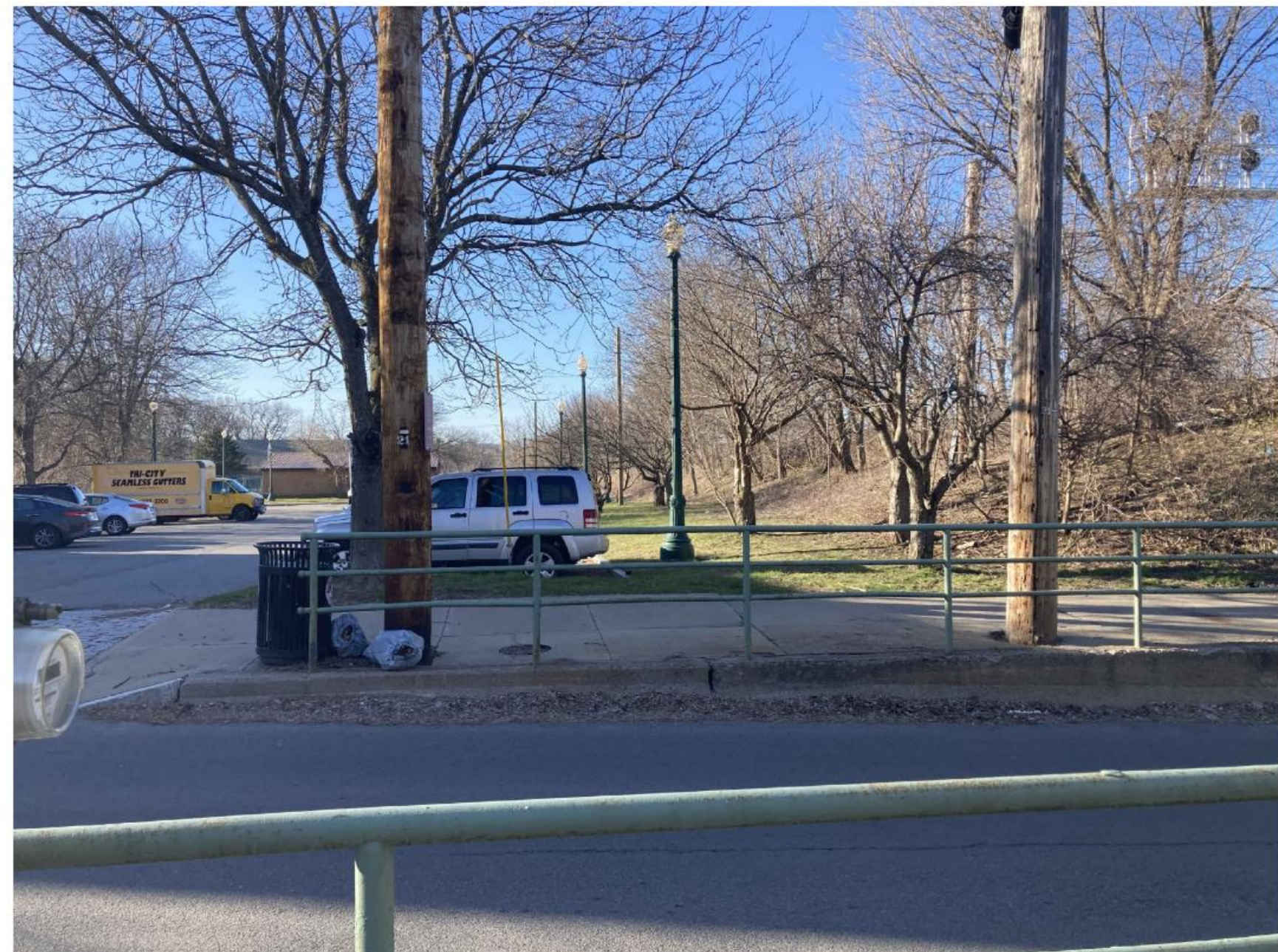


Lighting will be provided along the ceiling to illuminate the path and artwork.

The tunnel and connection between the bike path and Erie Boulevard will feature collages and ceramics created by community members as part of the Schenectady & Me project. Tiles will be mounted on the straight portions of the tunnel walls and a mural will be installed on the ceiling and outside walls.



This project is made possible through the collaboration of multiple, local art organizations who will be facilitating the curation and installation. The Schenectady & Me Project has evolved over several years and has been sponsored by many State and local funding partners.



EXISTING CONDITION



PROPOSED CONDITION

1 SCHEMATIC RENDERING - FRONT STREET
ALCO HERITAGE TRAIL

MATCH LINE - SEE SHEET 2

TRAIL PAINTED ON EXISTING ASPHALT

CAUTION SIGN "ACTIVE BOATHOUSE"

LANDSCAPE ISLAND TO PROTECT AND DELINEATE TRAIL CROSSING PARKING AREA

"ONE-WAY" DRIVE LOOP

"BRICK" DELINEATION AREA, THERMOPLASTIC OR SIMILAR TREATMENT, TYP.

8' ASPHALT MULTI-USE TRAIL

BRICK PLAZA

- REST AREA
- BENCH
- DIRECTIONAL SIGN
- TRASH RECEPTACLE
- SEASONAL PLANTERS

NEW SIDEWALK AND RAILING AT RAILROAD UNDERPASS (EAST & WEST)

"ROAD DIET" AND CROSSWALK TO TRAIL HEAD (FINAL LOCATION TBD)

BUILDING

BUILDING

PARKING AREA (W/ FADED PARKING STRIPES)

CSX RAILROAD

PROPOSED ALCO TRAIL

10' ASPHALT MULTI-USE TRAIL ALIGNMENT

RAILROAD MAINTENANCE ACCESS

- BOLLARDS & SIGNAGE FOR RAILROAD VEHICLES ONLY.

LANDSCAPE BUFFER

PAVED PARKING AREA

BRICK PLAZA

- REST AREA
- EXISTING TRAIN TRIBUTE
- BENCH
- TRASH RECEPTACLE
- SEASONAL PLANTERS
- EMPIRE STATE TRAIL KIOSK

CROSSWALK AND STOP SIGN

N. COLLEGE STREET

FRONT STREET

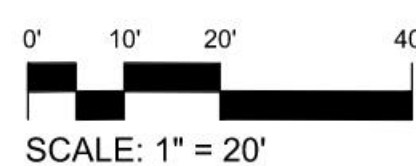
FRONT STREET

JOHN STREET

DELTA
ENGINEERS, ARCHITECTS, & SURVEYORS
220 Harborside Drive, Suite 202
Schenectady, New York 12305
Tel: 518.427.7200
Fax: 518.427.7210
Email: mail@delta-eas.com
www.delta-eas.com

LAND STUDIO
PRUDENT ENGINEERING
RETIREMENT LAND SURVEYING, INC.
Downtown Revitalization Initiative

1 SCHEMATIC PLAN
ALCO HERITAGE TRAIL



OPTION A

MATCH LINE - SEE SHEET 2

TRAIL PAINTED ON EXISTING ASPHALT

CAUTION SIGN "ACTIVE BOATHOUSE"

LANDSCAPE ISLAND TO PROTECT AND DELINEATE TRAIL CROSSING PARKING AREA

"ONE-WAY" DRIVE LOOP

"BRICK" DELINEATION AREA, THERMOPLASTIC OR SIMILAR TREATMENT, TYP.

8' ASPHALT MULTI-USE TRAIL

BRICK PLAZA

- REST AREA
- BENCH
- DIRECTIONAL SIGN
- TRASH RECEPTACLE
- SEASONAL PLANTERS

NEW SIDEWALK AND RAILING AT RAILROAD UNDERPASS (EAST & WEST)

"ROAD DIET" AND CROSSWALK TO TRAIL HEAD (FINAL LOCATION TBD)

BUILDING

CONCRETE SIDEWALK

PARKING AREA (W/ FADED PARKING STRIPES)

CSX RAILROAD

PROPOSED ALCO TRAIL

LANDS OF SIMONE FLOYD

LANDS OF S.U.R.A.

LANDS OF CSX CORPORATION

CSX SERVICE ACCESS

GRAVEL

"CLEARANCE" CONC. ABUTMENT

Lot's Now or Formerly of ALCOA MOHAWK DISTRICT PLANNING GRID No. D-10000000 Page Found Section 1 of Block 1 Lot 2

BUILDING

10' ASPHALT MULTI-USE TRAIL ALIGNMENT

RAILROAD MAINTENANCE ACCESS

- BOLLARDS & SIGNAGE FOR RAILROAD VEHICLES ONLY.

LANDSCAPE BUFFER

PAVED PARKING AREA

BRICK PLAZA

- REST AREA
- EXISTING TRAIN TRIBUTE
- BENCH
- TRASH RECEPTACLE
- SEASONAL PLANTERS
- EMPIRE STATE TRAIL KIOSK

CROSSWALK AND STOP SIGN

JOHN STREET

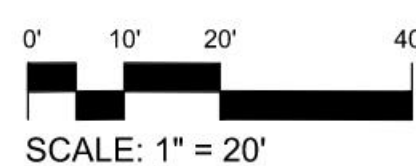
FRONT STREET

FRONT STREET

N. COLLEGE STREET

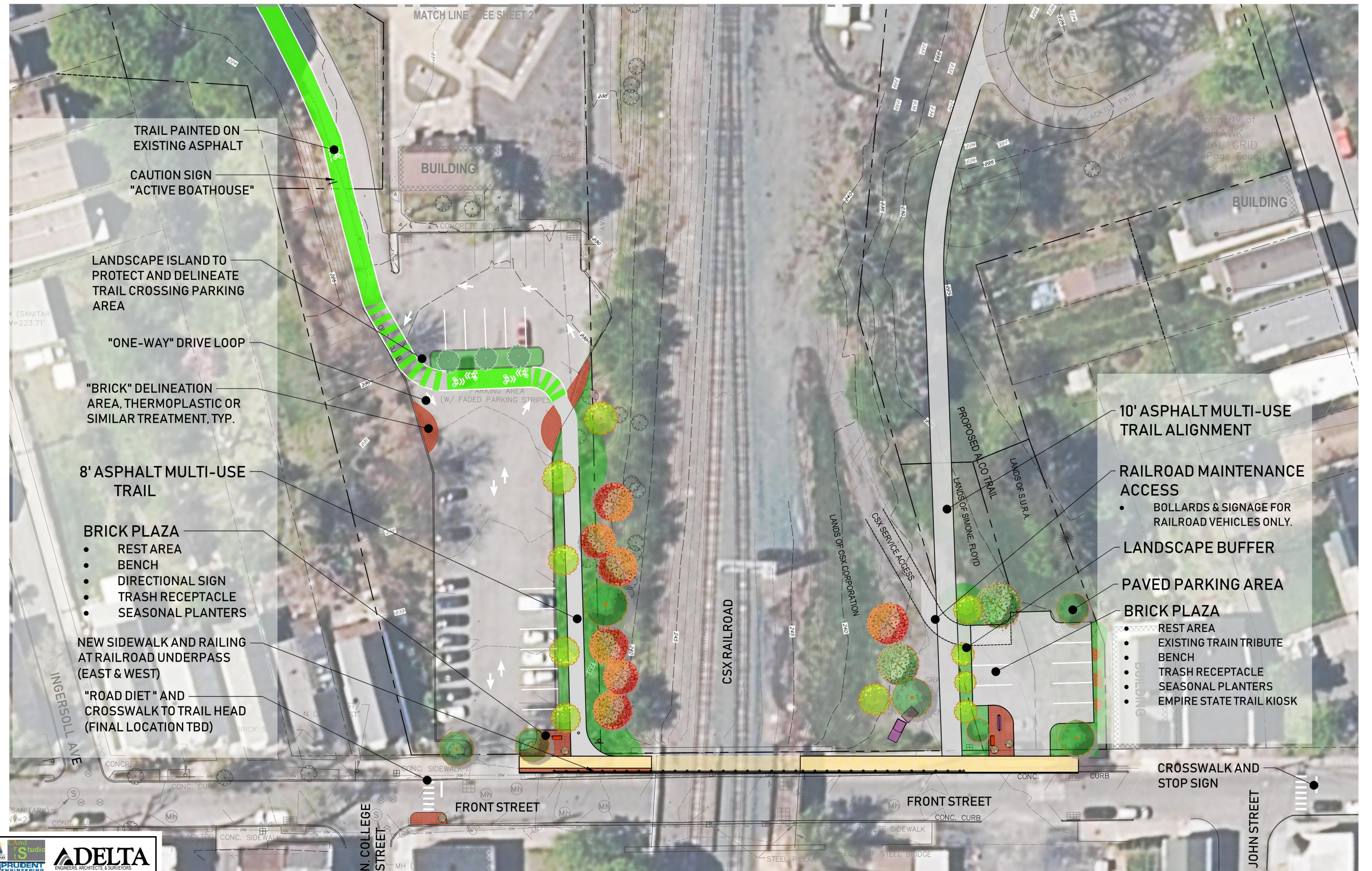
DELTA
ENGINEERS, ARCHITECTS, & SURVEYORS
220 Harborside Drive, Suite 202
Schenectady, New York 12305
Tel: 518.427.7200
Fax: 518.427.7210
Email: mail@delta-eas.com
www.delta-eas.com

1 SCHEMATIC PLAN ALCO HERITAGE TRAIL



OPTION B

Land Studio
PRUDENT ENGINEERING
RETIREMENT LAND SURVEYING, INC.
Downtown Revitalization Initiative



TRAIL PAINTED ON EXISTING ASPHALT

CAUTION SIGN "ACTIVE BOATHOUSE"

LANDSCAPE ISLAND TO PROTECT AND DELINEATE TRAIL CROSSING PARKING AREA

"ONE-WAY" DRIVE LOOP

"BRICK" DELINEATION AREA, THERMOPLASTIC OR SIMILAR TREATMENT, TYP.

8' ASPHALT MULTI-USE TRAIL

BRICK PLAZA

- REST AREA
- BENCH
- DIRECTIONAL SIGN
- TRASH RECEPTACLE
- SEASONAL PLANTERS

NEW SIDEWALK AND RAILING AT RAILROAD UNDERPASS (EAST & WEST)

"ROAD DIET" AND CROSSWALK TO TRAIL HEAD (FINAL LOCATION TBD)

10' ASPHALT MULTI-USE TRAIL ALIGNMENT

RAILROAD MAINTENANCE ACCESS

- BOLLARDS & SIGNAGE FOR RAILROAD VEHICLES ONLY.

LANDSCAPE BUFFER

PAVED PARKING AREA

BRICK PLAZA

- REST AREA
- EXISTING TRAIN TRIBUTE
- BENCH
- TRASH RECEPTACLE
- SEASONAL PLANTERS
- EMPIRE STATE TRAIL KIOSK

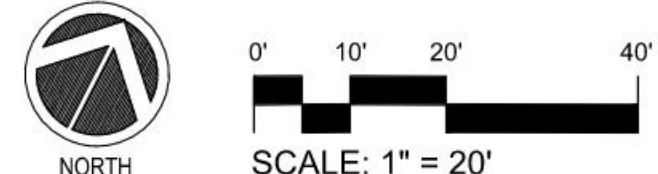
CROSSWALK AND STOP SIGN

DELTA
ENGINEERS, ARCHITECTS, & SURVEYORS
220 Harborside Drive, Suite 202
Schenectady, New York 12305
Tel: 518.427.7200
Fax: 518.427.7210
Email: mail@delta-eas.com
www.delta-eas.com

PRUDENT ENGINEERING
RETIREMENT LAND SURVEYING, INC.

Land Studio
Downtown Revitalization Initiative

1 SCHEMATIC PLAN
ALCO HERITAGE TRAIL



OPTION C

ASPHALT TRAIL ALIGNMENT

ADJUST CATCH BASIN RIM AND ADD NEW BICYCLE SAFE GRATE

LANDSCAPE BUFFERS

LIGHTING AT 80" O.C. MATCH EXISTING

STABILIZED ACCESS TO BOAT DOCKS

MOHAWK RIVER

RIVERSIDE PARK

WAYFINDING KIOSK

BOLLARD TO LIMIT VEHICULAR TRAFFIC

REDEFINE EDGE TO DIRECT STORMWATER TO CATCH BASIN

REUSE BOULDERS

EXISTING UTILITIES TO BE AVOIDED

BUILDING

UNION COLLEGE BOATHOUSE BUILDING

TYPICAL 70' BOAT

CITY POOL

Lands Now or Formerly of CITY OF SCHENECTADY No Deed Book or Page Found Section 39.56 Block 1 Lot 1.1 179 Front Street

CAUTION SIGN "ACTIVE BOATHOUSE"

CSX RAILROAD

INGERSOLL AVE.



EXISTING PHOTO - INGERSOLL AVE AT RIVERSIDE PARK

MATCH LINE - SEE SHEET 1

2 SCHEMATIC PLAN ALCO HERITAGE TRAIL



0' 10' 20' 40' SCALE: 1" = 20'

And Studio
ENGINEERS, ARCHITECTS, & SURVEYORS

PRUDENT ENGINEERING

BETHNEHEM LAND SURVEYING

DELTA
ENGINEERS, ARCHITECTS, & SURVEYORS
220 Harborside Drive, Suite 202
Schenectady, New York 12305
Tel: 518-427-7200
Fax: 518-427-7210
Email: mail@delta-eas.com
www.delta-eas.com

Downtown Revitalization Initiative